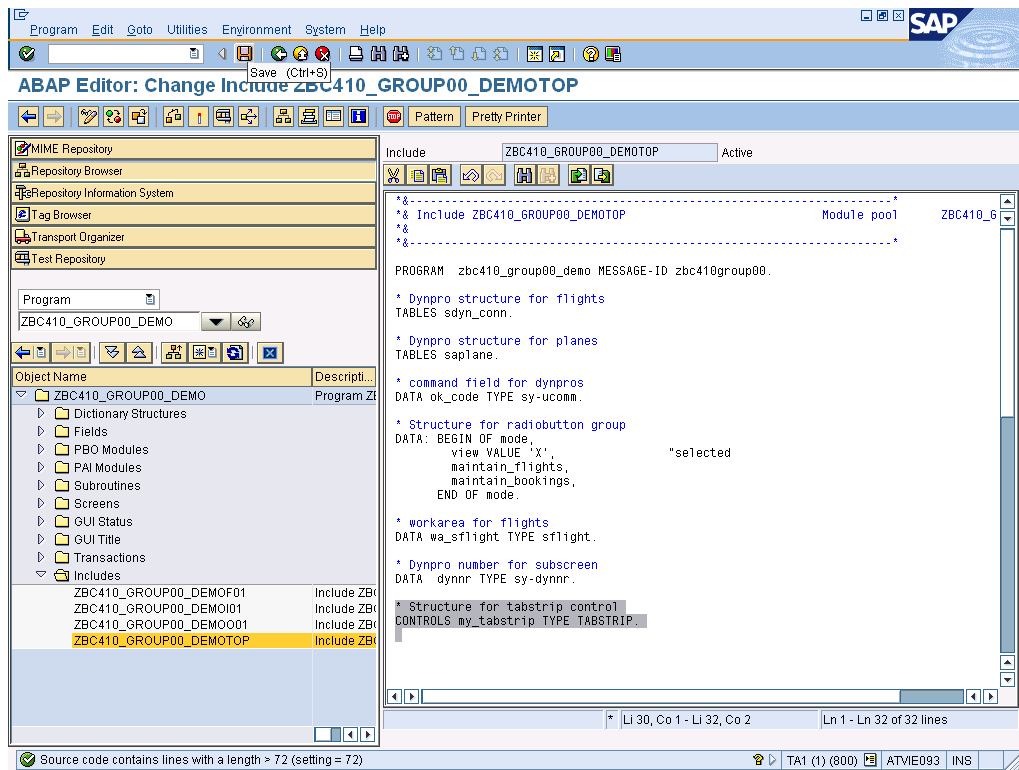




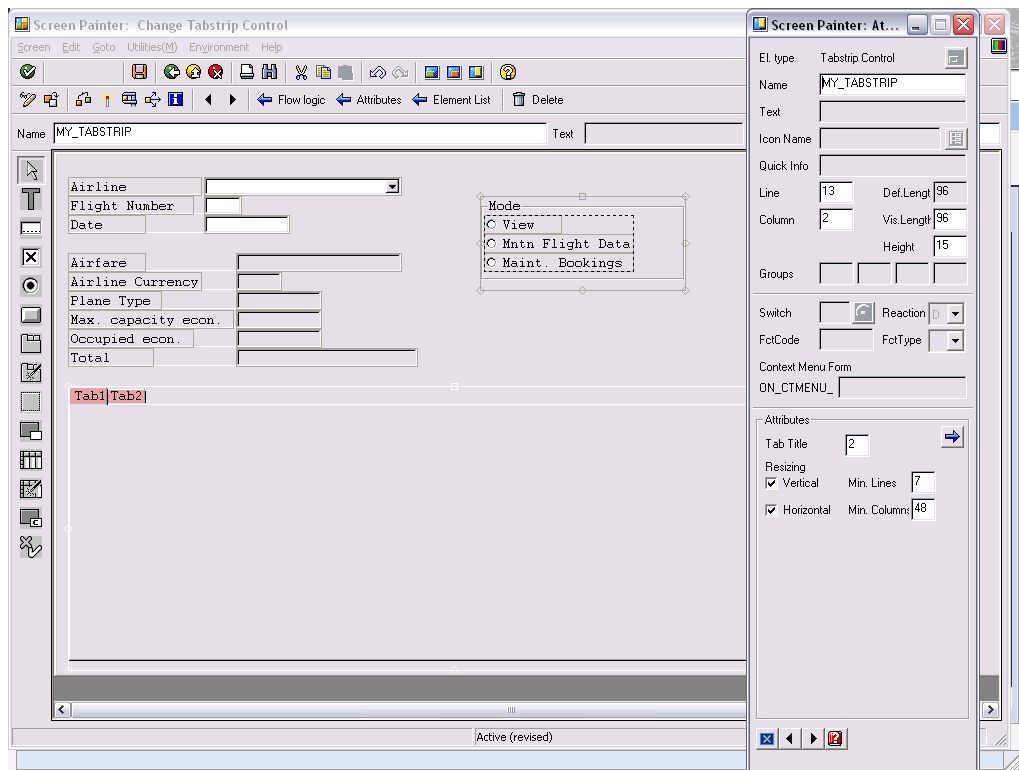
**EXERCISE 6**

**Created in February 2007**

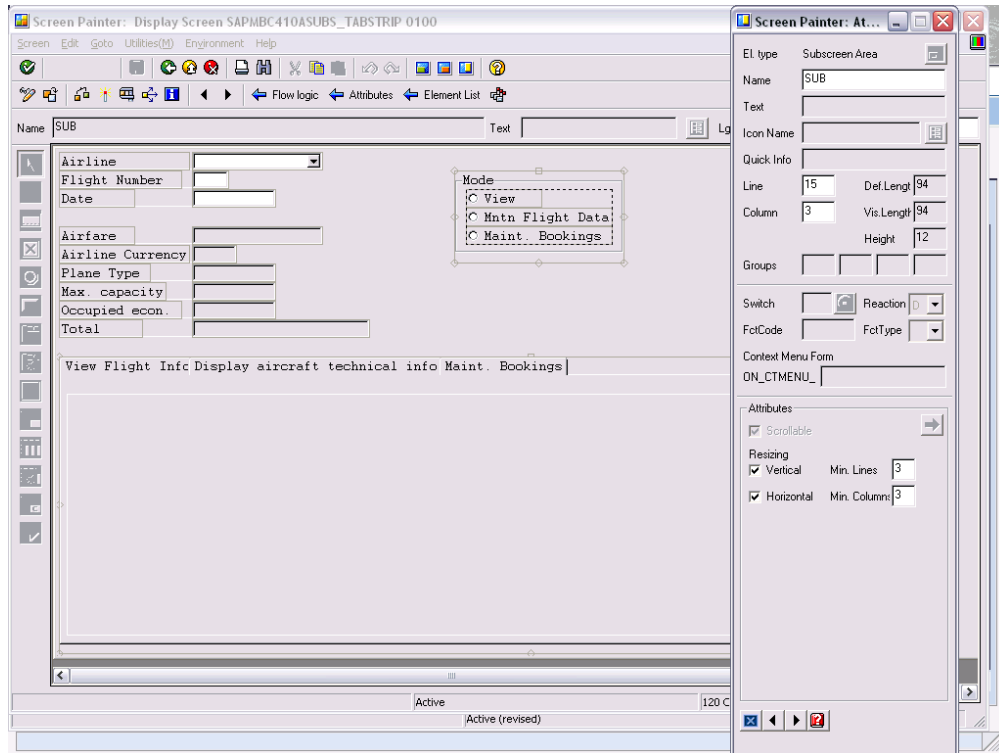
➔ Please create in your TOP include a control for your TabStrip



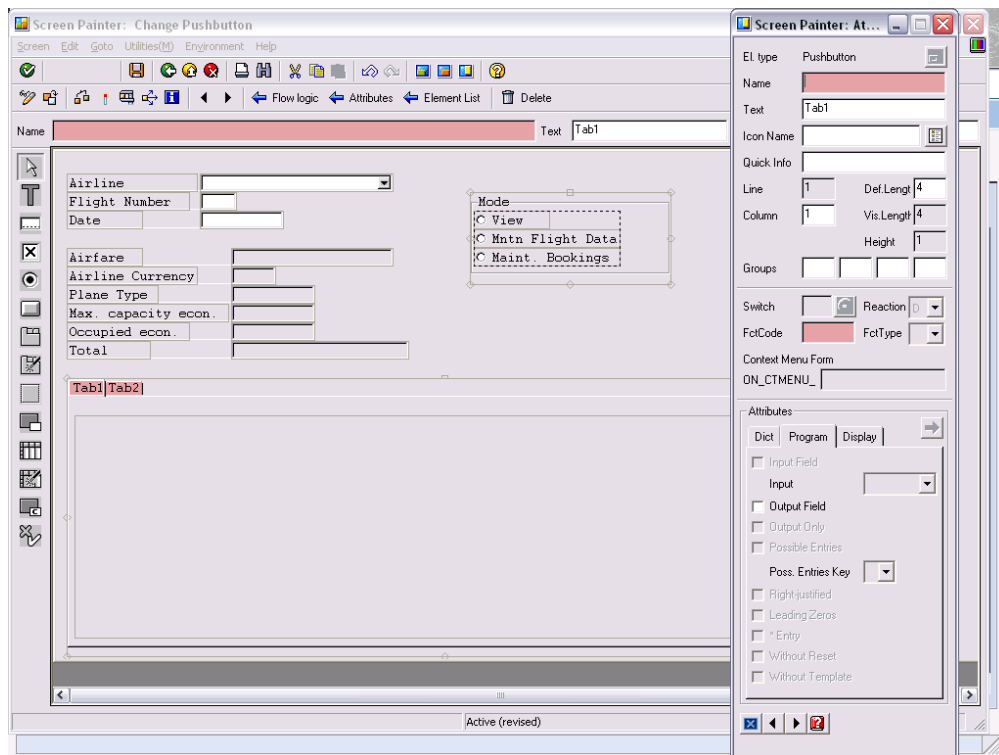
➔ Please create a TabStrip called "MY\_TABSTRIP" on your Dynpro 0100



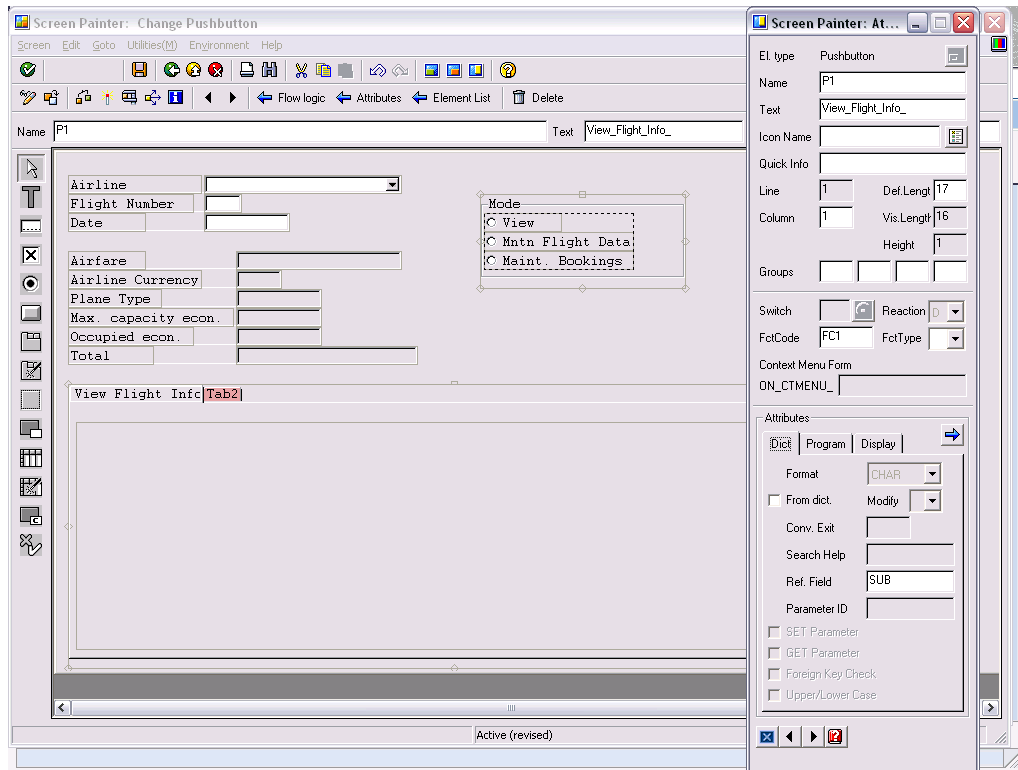
- ➔ Please define a sub area called "SUB" within your TabStrip control on your dynpro 0100



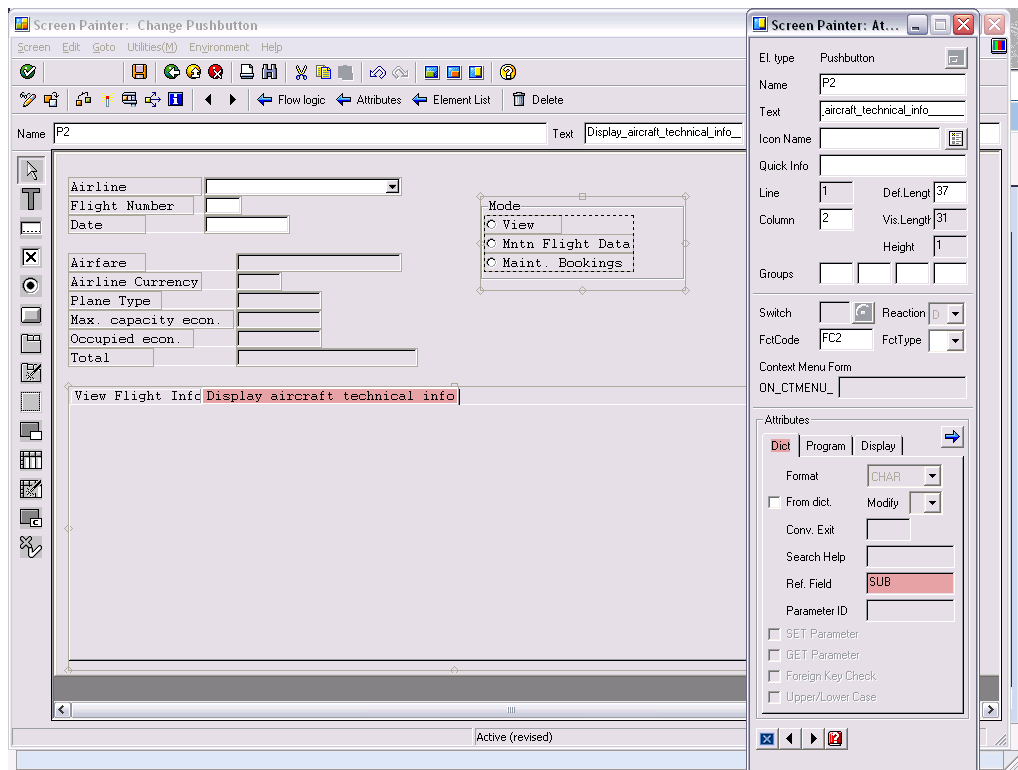
- ➔ Please make a double click on the tabstrip "Tab1"



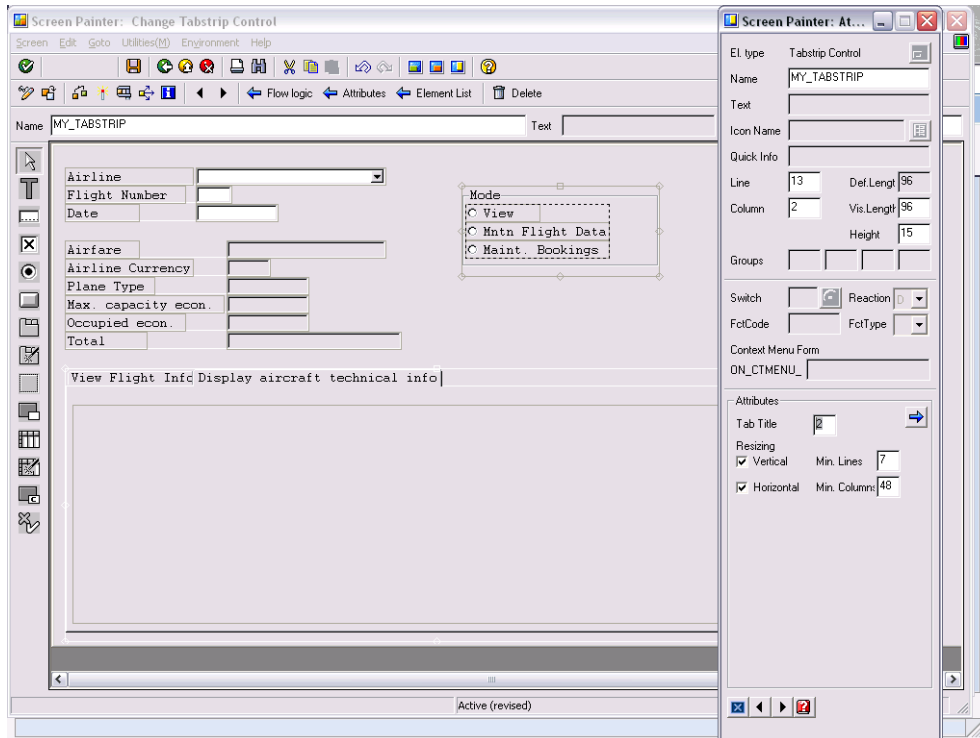
➔ Please maintain the settings of this TabStip



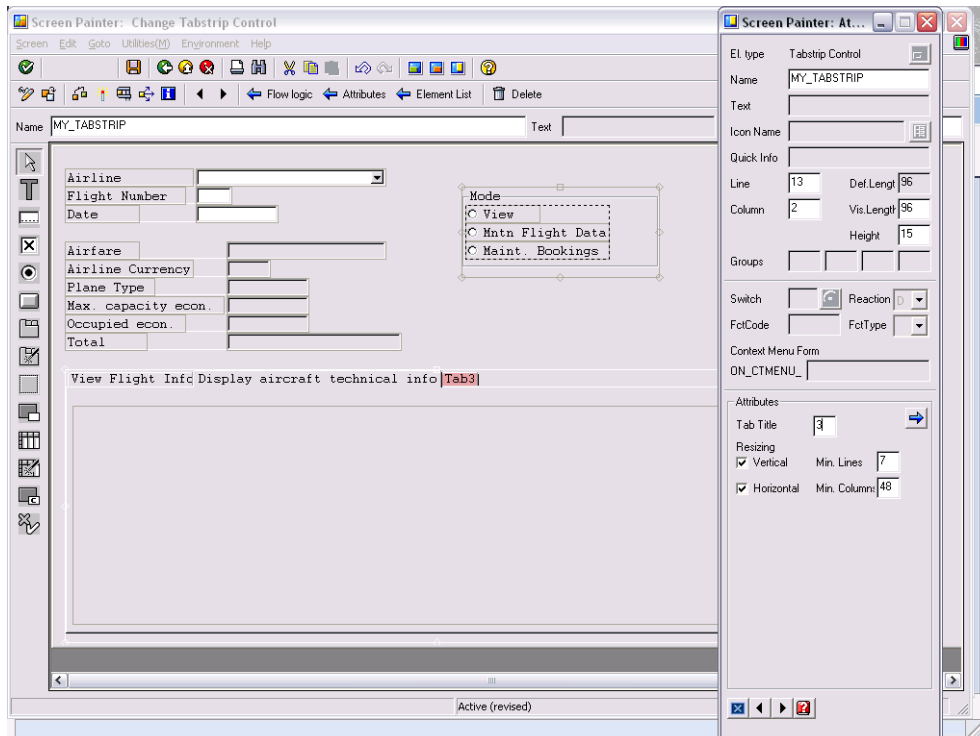
➔ Make the following changes at the second tabstip



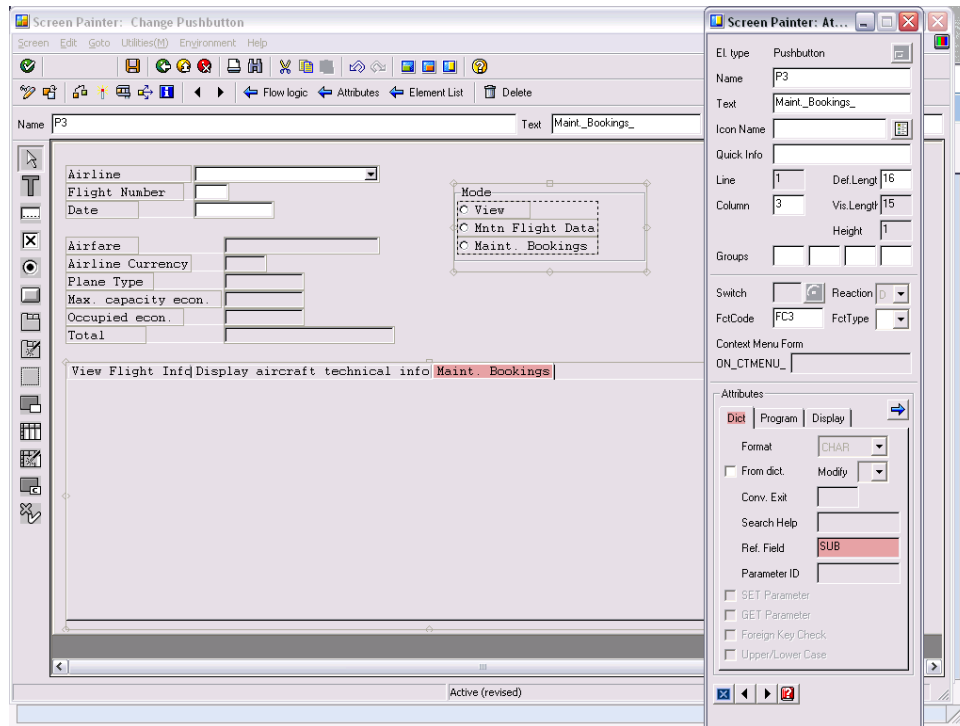
- ➔ Double click on the tabstrip "MY\_TABSTRIP"
- ➔ Please change the field "Tab title" from 2 to 3



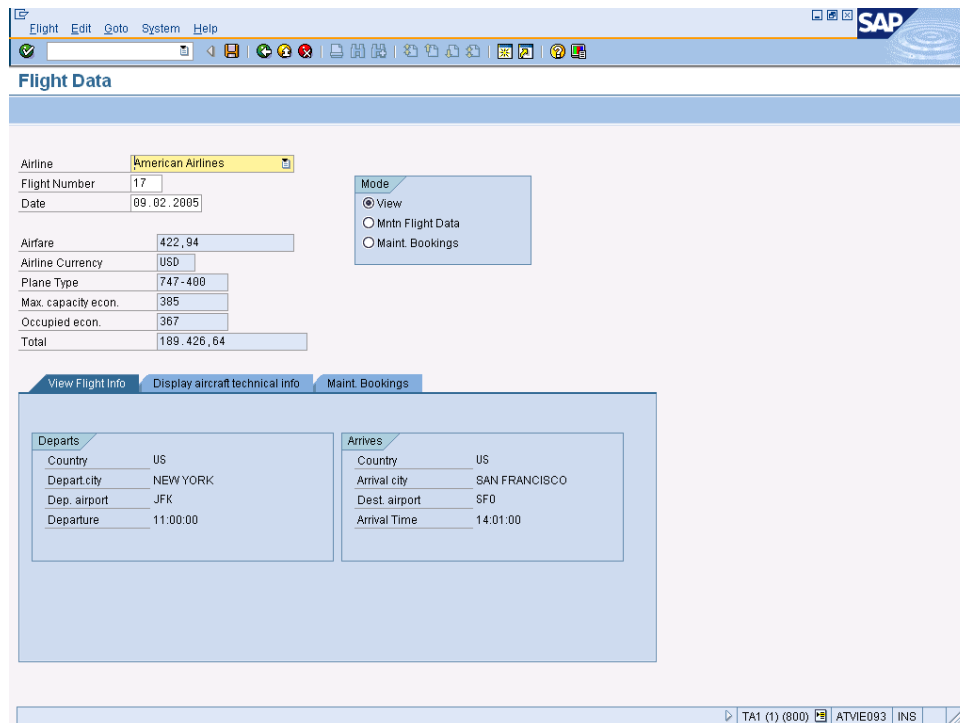
- ➔ And now you have the possibility to maintain the 3.tabstrip
- ➔ Double click on Tab3



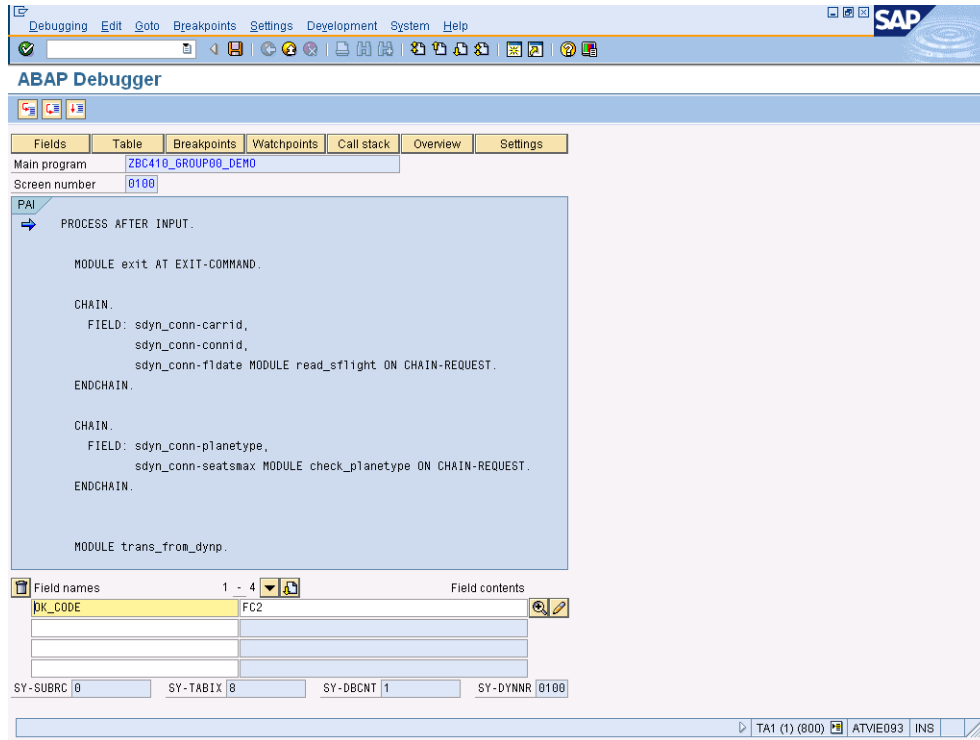
➔ And make the following changes



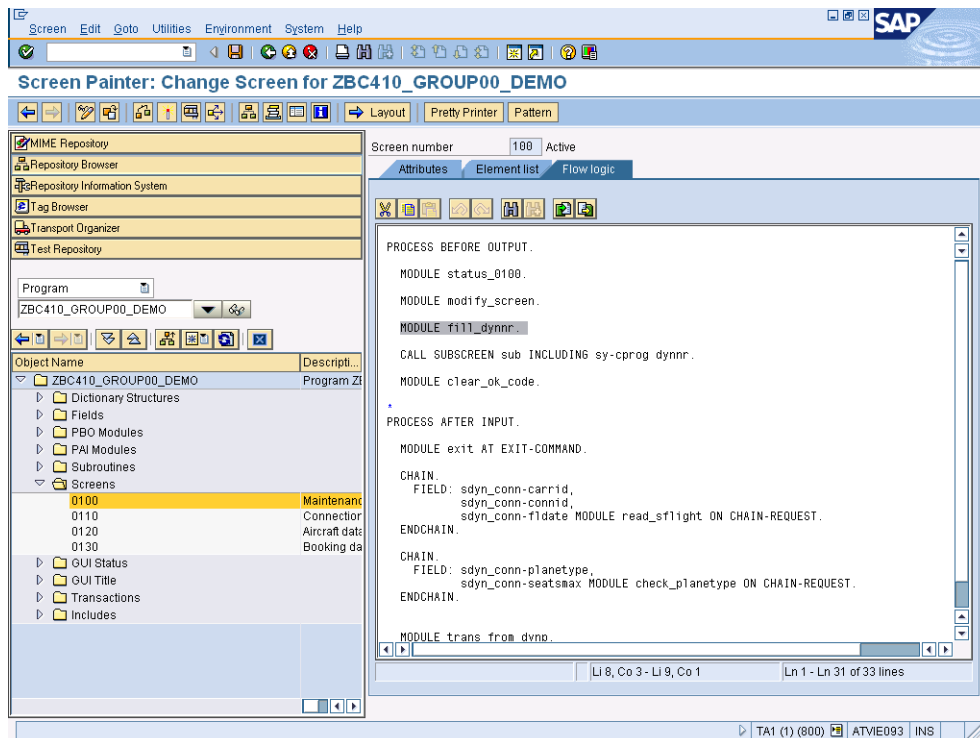
- ➔ Please save your changes, activate your ABAP and his objects and test your application
- ➔ It seems to be OK, but if you try to change in your tabstrip to another view, there is no change on the screen. What to do?



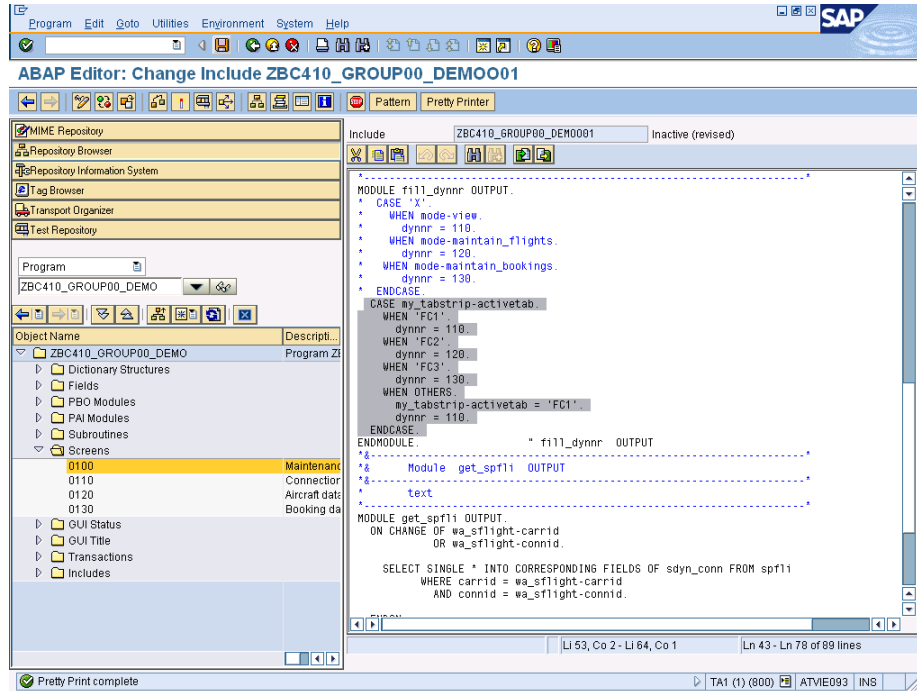
- ➔ Switch on the debugging (OK-field - /h) and click on the strip "Display aircraft technical info"
- ➔ Please check the content of the OK\_CODE



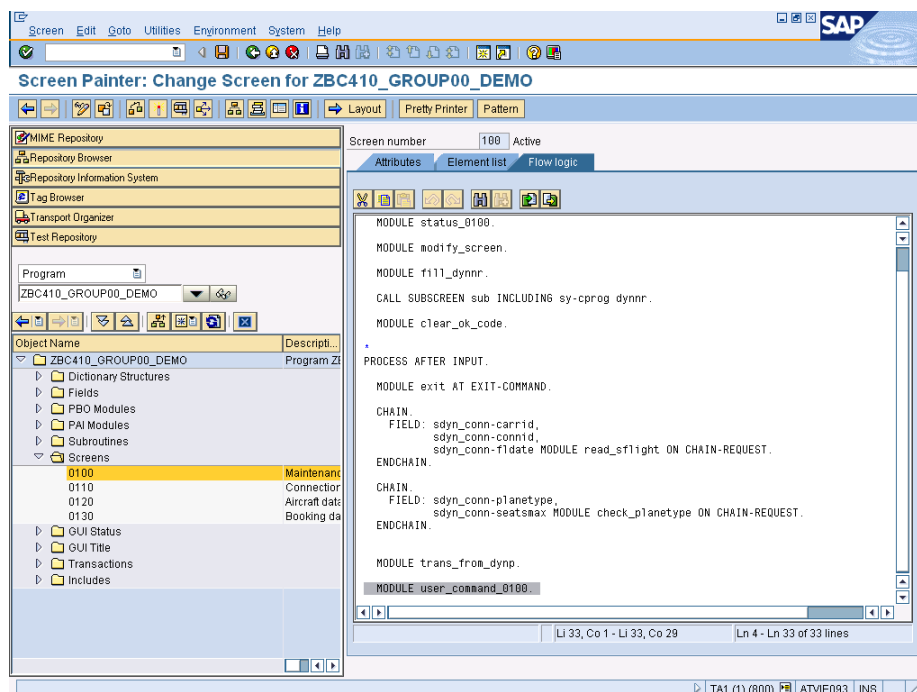
- ➔ Please modify the PBO module "fill\_dynnr"



- ➔ Please deactivate the old ABAP coding for this PBO and make the following modification
- ➔ The old ABAP coding is working but in that case if you make a change at your radio buttons the sub screens will be showed always in the first tabstrip and we don't want this.

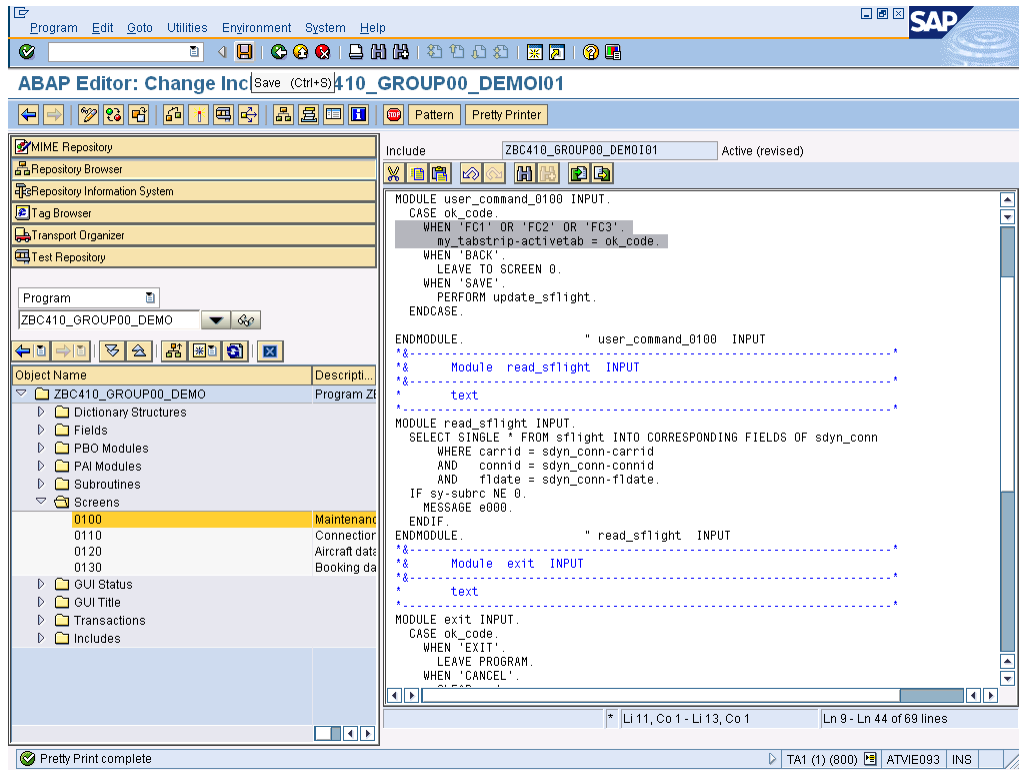


- ➔ To get the tabstrip active you have to make a bit changing in the PAI module "user\_command\_0100" as well

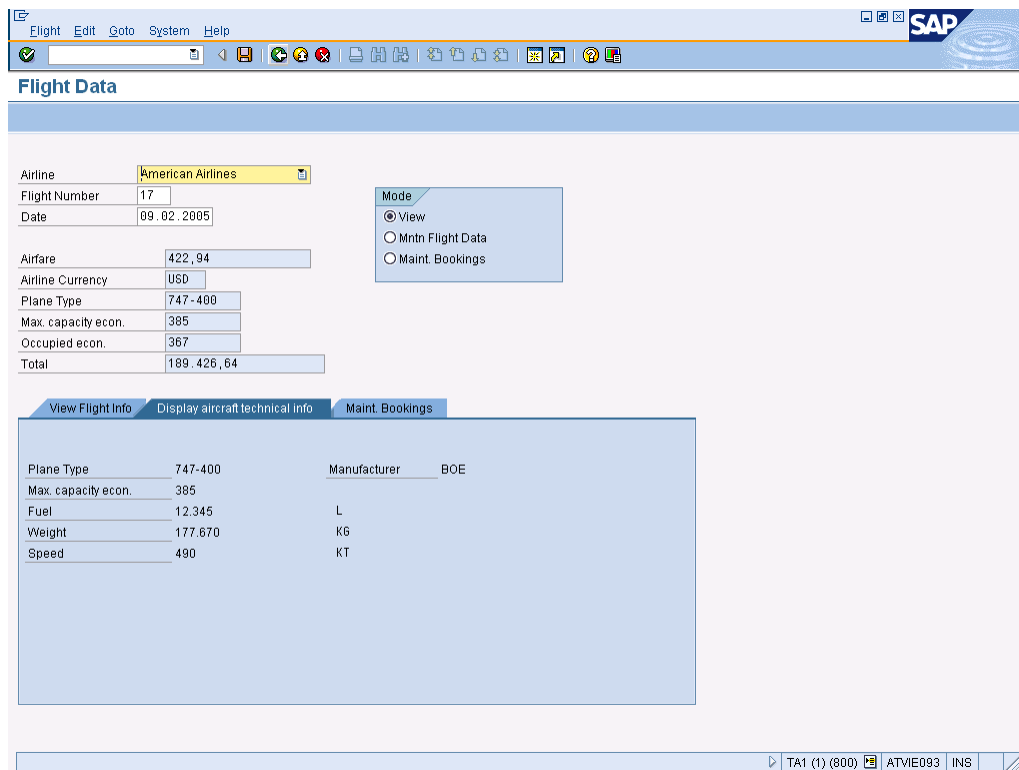




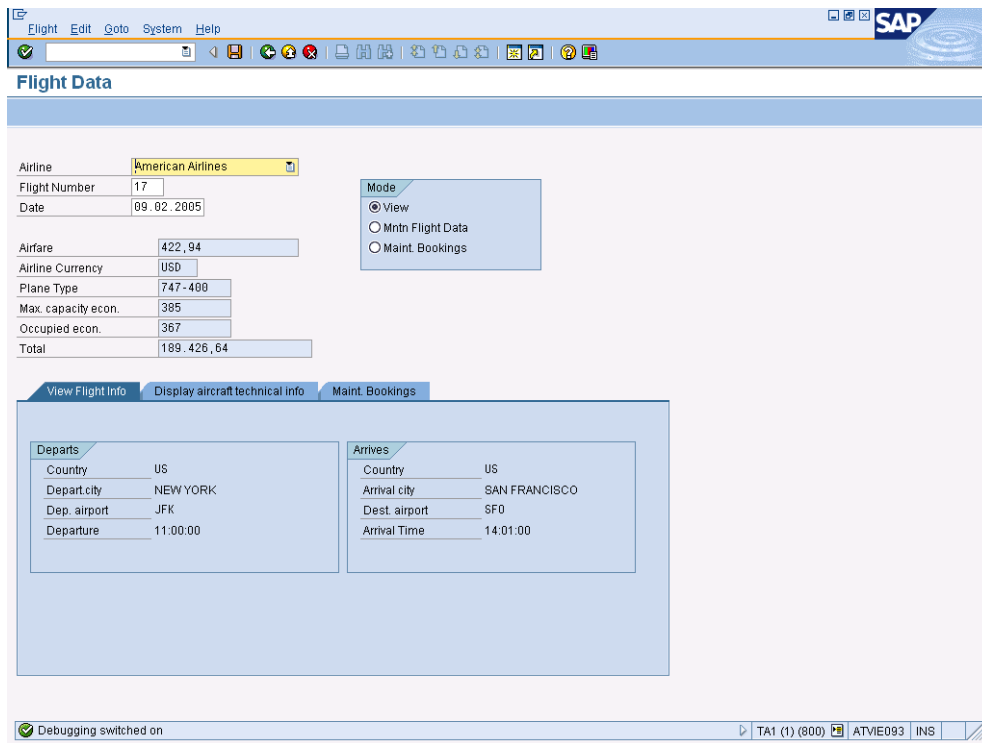
➔ Please make the following changes in your ABAP



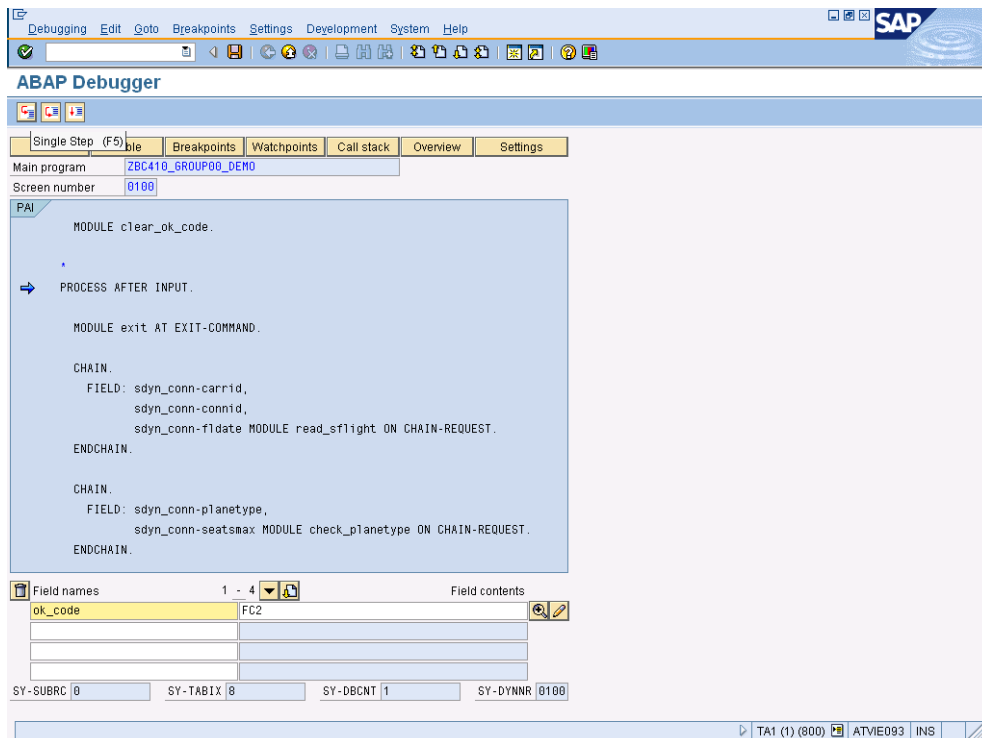
➔ After these changes your application is working fine



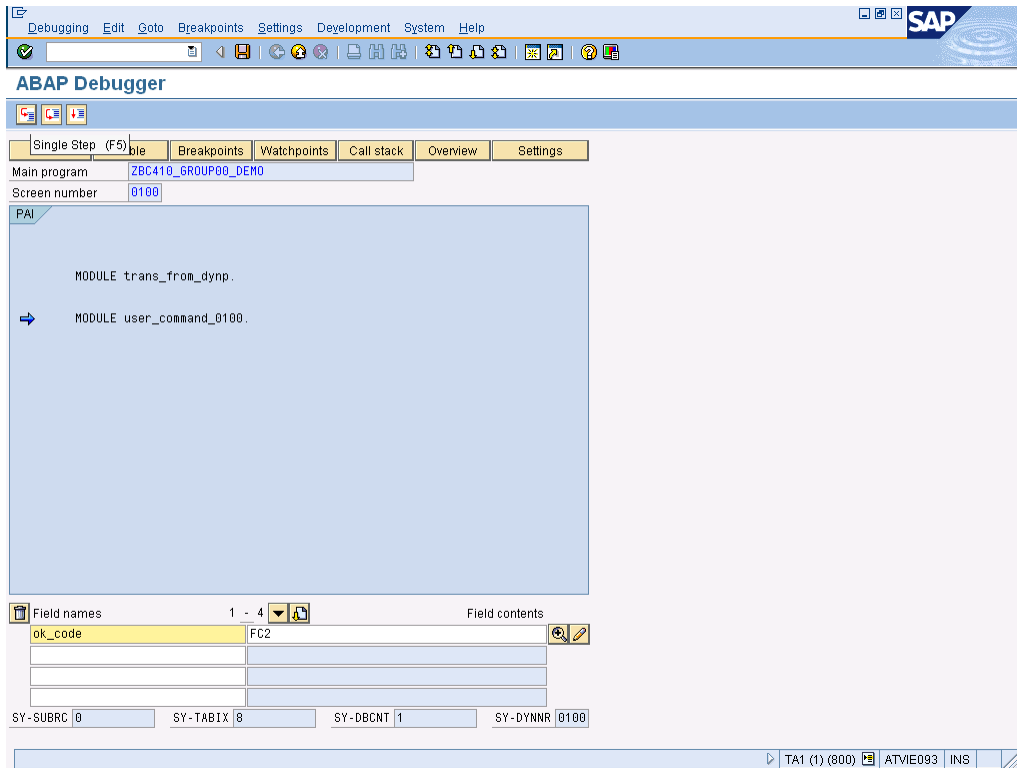
- ➔ Please start your application
- ➔ Please activate the debugging (/h)
- ➔ Please click on TabStrip "Display aircraft technical info"



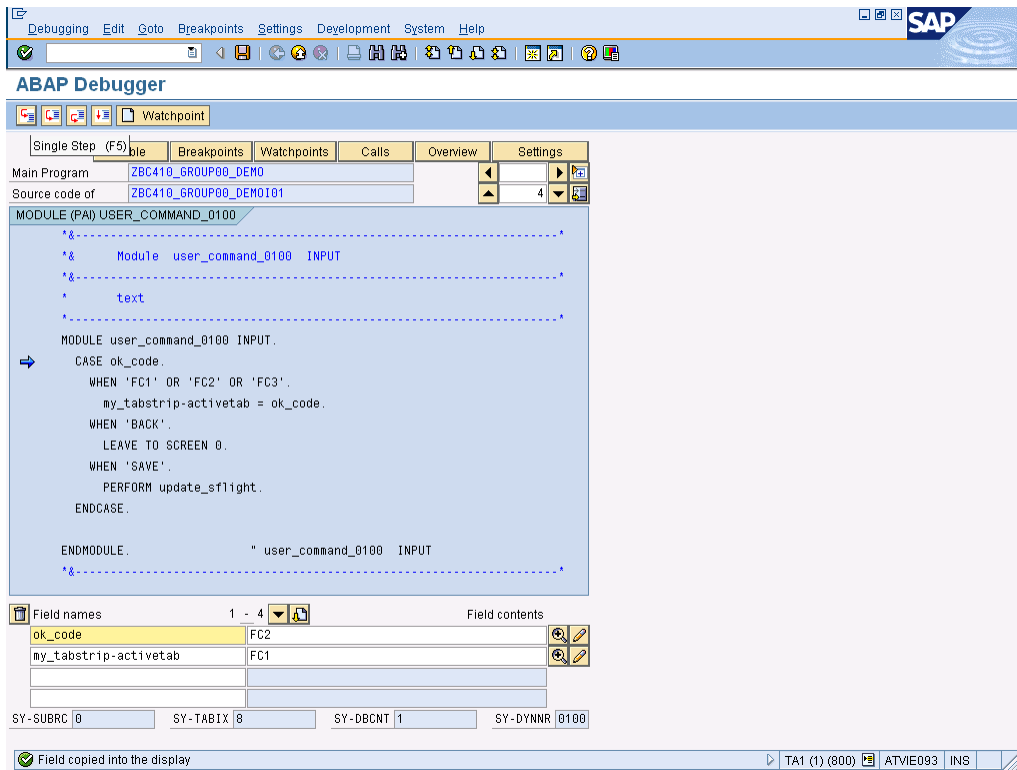
- ➔ You are in the PAI section of your main screen 0100



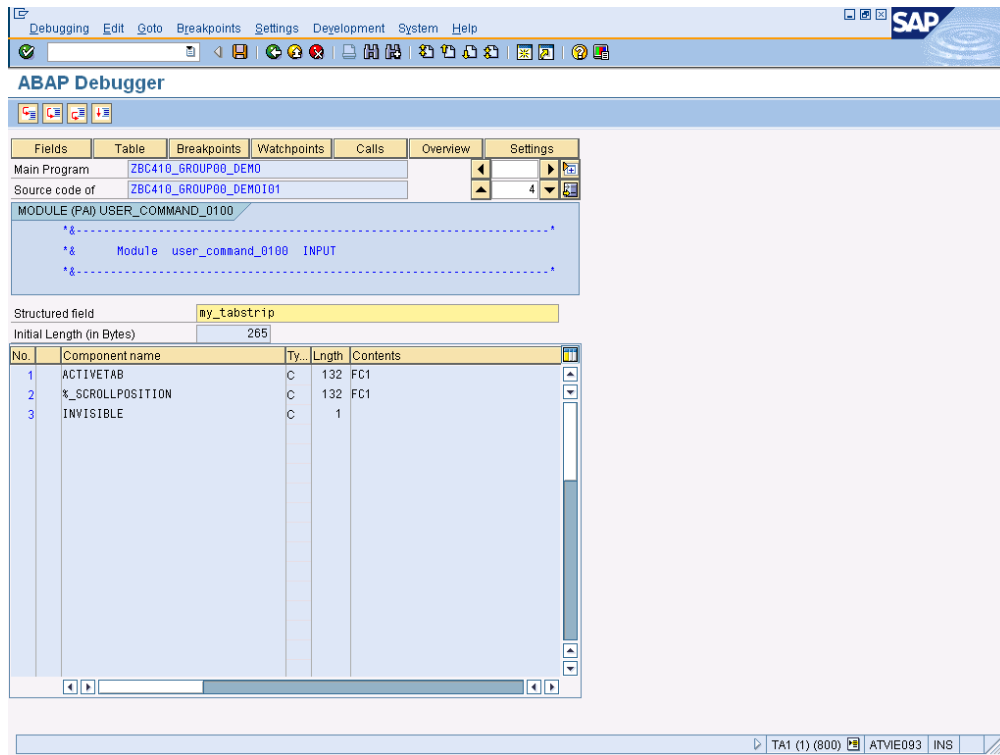
→ Your PAI module "user\_command\_0100" will be called (the last PAI module)



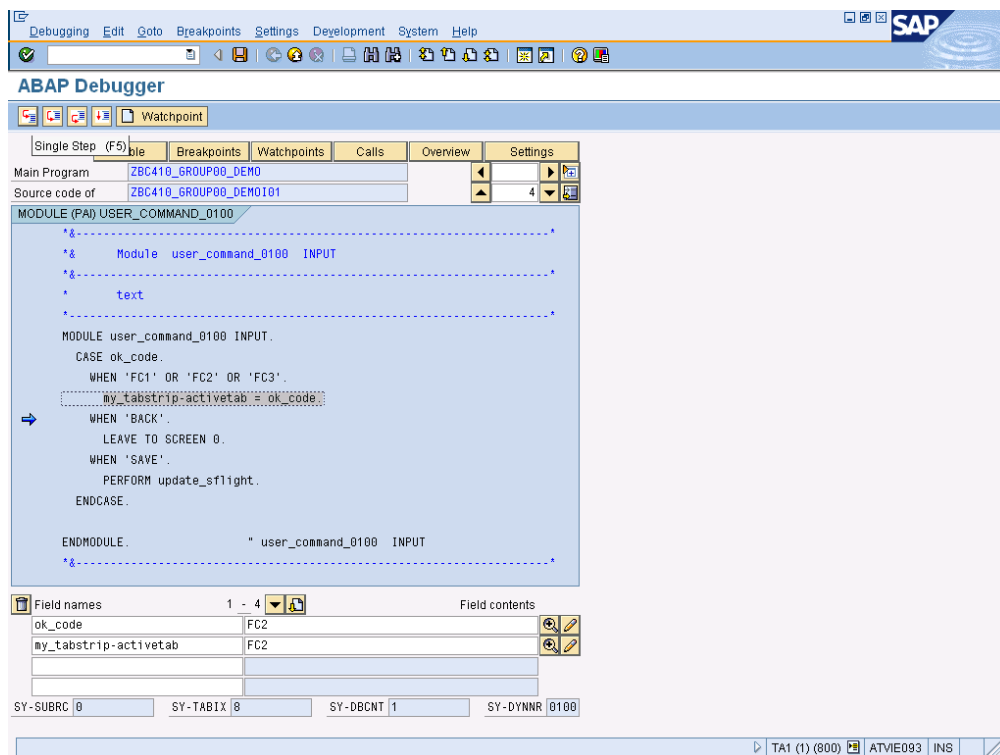
→ Your OK\_CODE will be checked



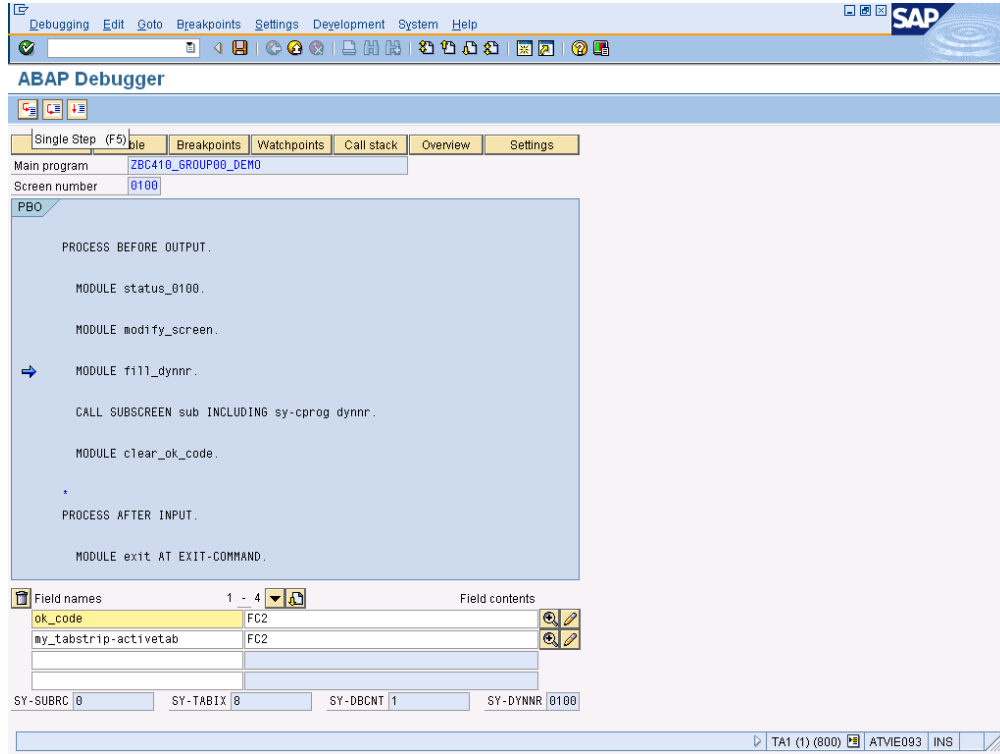
- ➔ The active tab of your tabstrip "MY\_TABSTRIP" can be checked via the Component "ACTIVETAB" – it is visible if you double click on "MY\_TABSTRIP"



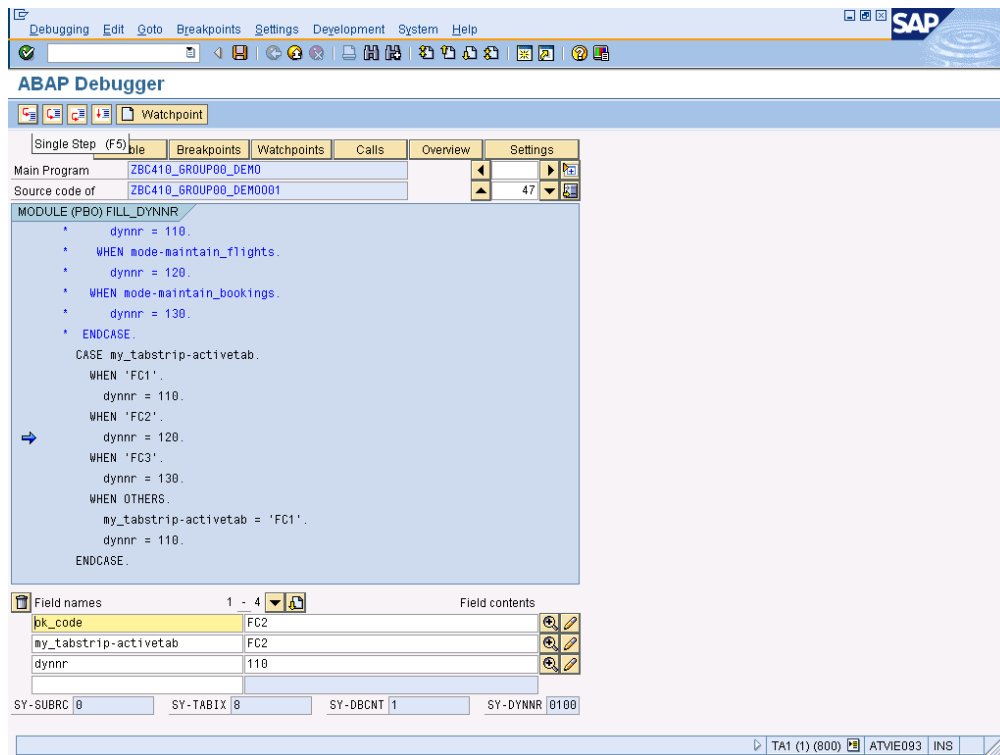
- ➔ We will change the activetab of our tabstrip in our ABAP coding



➔ After PAI – the PBO modules will be called



➔ And in the PBO module "fill\_dynnr" the number of the sub screen to be called will be changed



→ You can see also this change

Debugging Edit Goto Breakpoints Settings Development System Help

ABAP Debugger

Single Step (F5) | Breakpoints | Watchpoints | Calls | Overview | Settings

Main Program: ZBC410\_GROUP00\_DEMO  
Source code of: ZBC410\_GROUP00\_DEM0001

```

MODULE (PBO) FILL_DYNNR
*
* dynnr = 110.
* WHEN mode-maintain_flights.
* dynnr = 120.
* WHEN mode-maintain_bookings.
* dynnr = 130.
* ENDCASE.
CASE my_tabstrip-activetab.
WHEN 'FC1'.
    dynnr = 110.
WHEN 'FC2'.
    dynnr = 120.
→ WHEN 'FC3'.
    dynnr = 130.
WHEN OTHERS.
    my_tabstrip-activetab = 'FC1'.
    dynnr = 110.
ENDCASE.

```

Field names	Field contents
ok_code	FC2
my_tabstrip-activetab	FC2
dynnr	120

SY-SUBRC 0    SY-TABIX 8    SY-DBCNT 1    SY-DYNNR 0100

TA1 (1) (800) | ATVIE093 | INS

→ And at this Dynpro command the right sub screen will be called

Debugging Edit Goto Breakpoints Settings Development System Help

ABAP Debugger

Fields | Table | Breakpoints | Watchpoints | Call stack | Overview | Settings

Main program: ZBC410\_GROUP00\_DEMO  
Screen number: 0100

```

PBO
PROCESS BEFORE OUTPUT.
MODULE status_0100.
MODULE modify_screen.
MODULE fill_dynnr.
→ CALL SUBSCREEN sub INCLUDING sy-cprog dynnr.
MODULE clear_ok_code.
*
PROCESS AFTER INPUT.
MODULE exit AT EXIT-COMMAND.

```

Field names	Field contents
ok_code	FC2
my_tabstrip-activetab	FC2
dynnr	120

SY-SUBRC 0    SY-TABIX 8    SY-DBCNT 1    SY-DYNNR 0100

TA1 (1) (800) | ATVIE093 | INS

➔ Congratulations 😊 Your application is working fine

The screenshot shows the SAP Flight Data application interface. At the top, there is a menu bar with 'Flight', 'Edit', 'Goto', 'System', and 'Help'. Below the menu bar is a toolbar with various icons. The main content area is titled 'Flight Data' and contains several input fields and a mode selection box.

**Flight Data Input Fields:**

- Airline: American Airlines
- Flight Number: 17
- Date: 09.02.2005
- Airfare: 422,94
- Airline Currency: USD
- Plane Type: 747-400
- Max. capacity econ.: 385
- Occupied econ.: 367
- Total: 189.426,64

**Mode Selection:**

- View
- Mntn Flight Data
- Maint. Bookings

**Technical Information Tab:**

Plane Type	747-400	Manufacturer	BOE
Max. capacity econ.	385		
Fuel	12.345	L	
Weight	177.670	KG	
Speed	490	KT	

At the bottom right of the interface, there is a status bar showing 'TA1 (1) (800)' and 'ATVIE093 INS'.