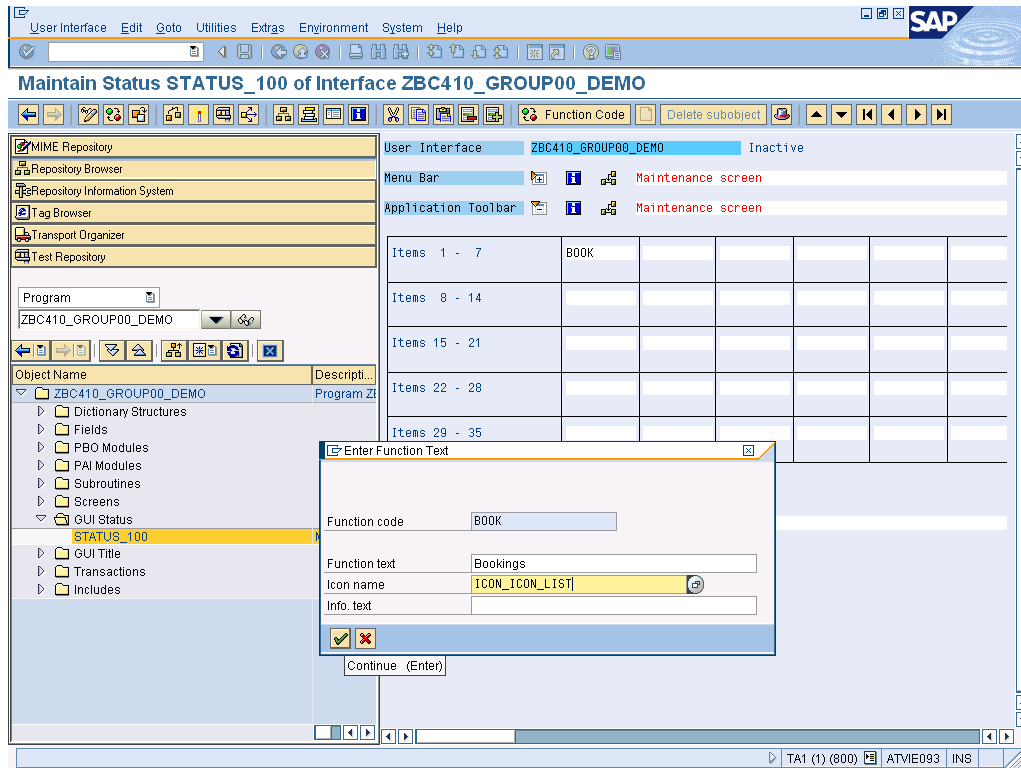




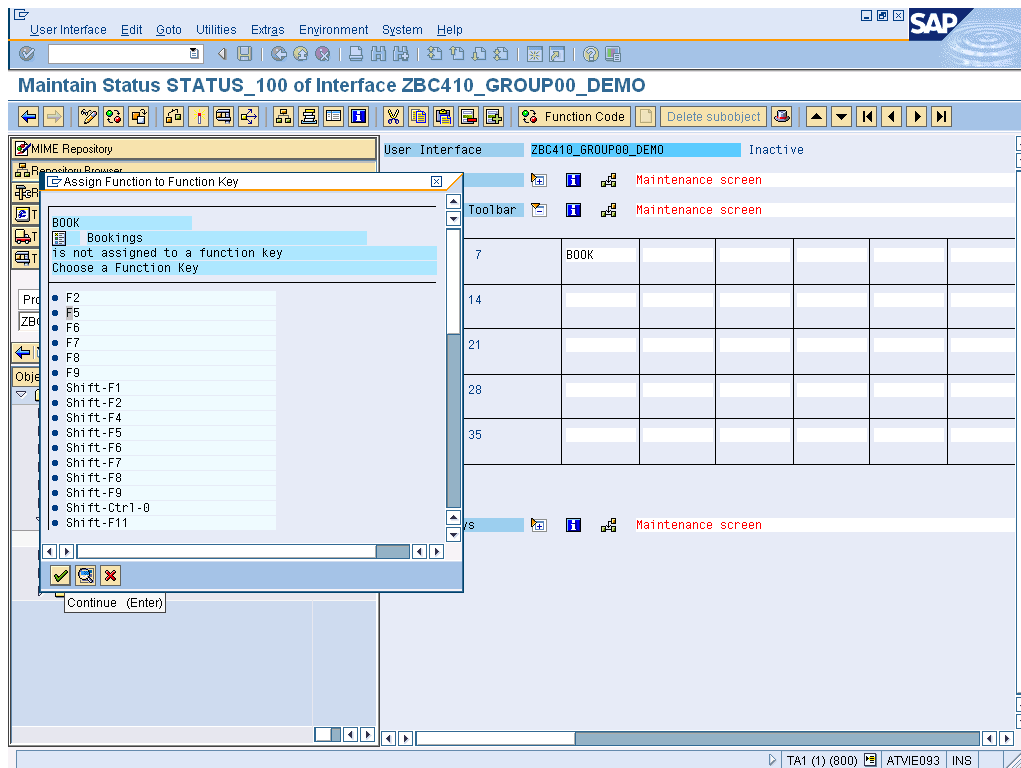
EXERCISE 10

Created in February 2007

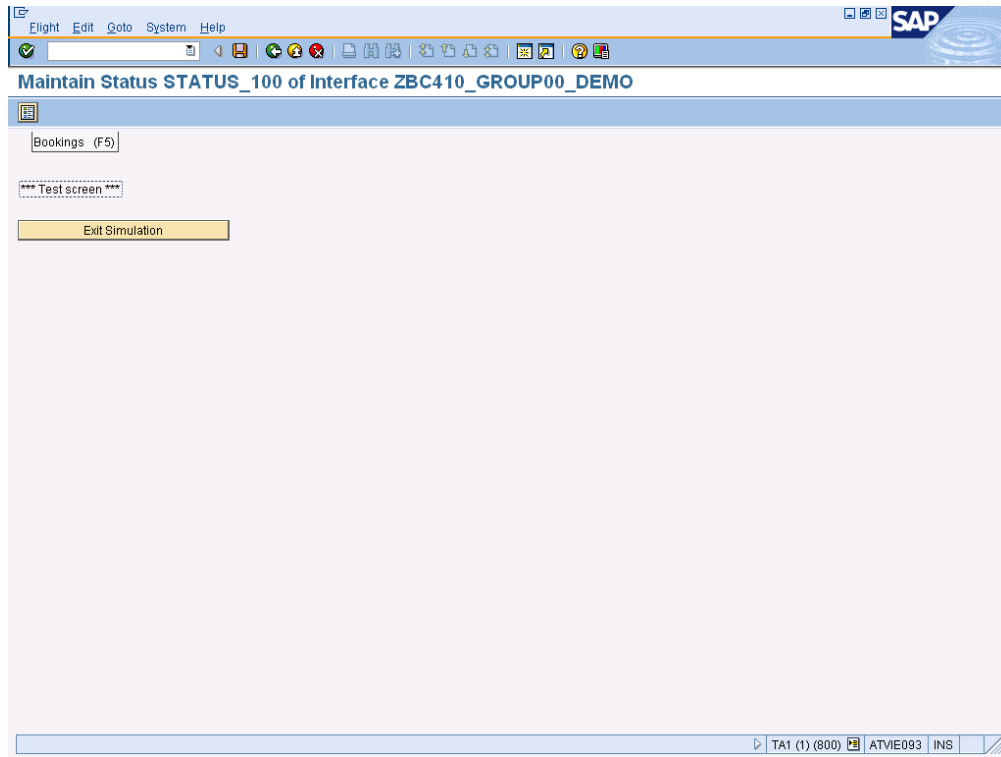
→ Create a new push button BOOK for your application in your "STATUS_100"



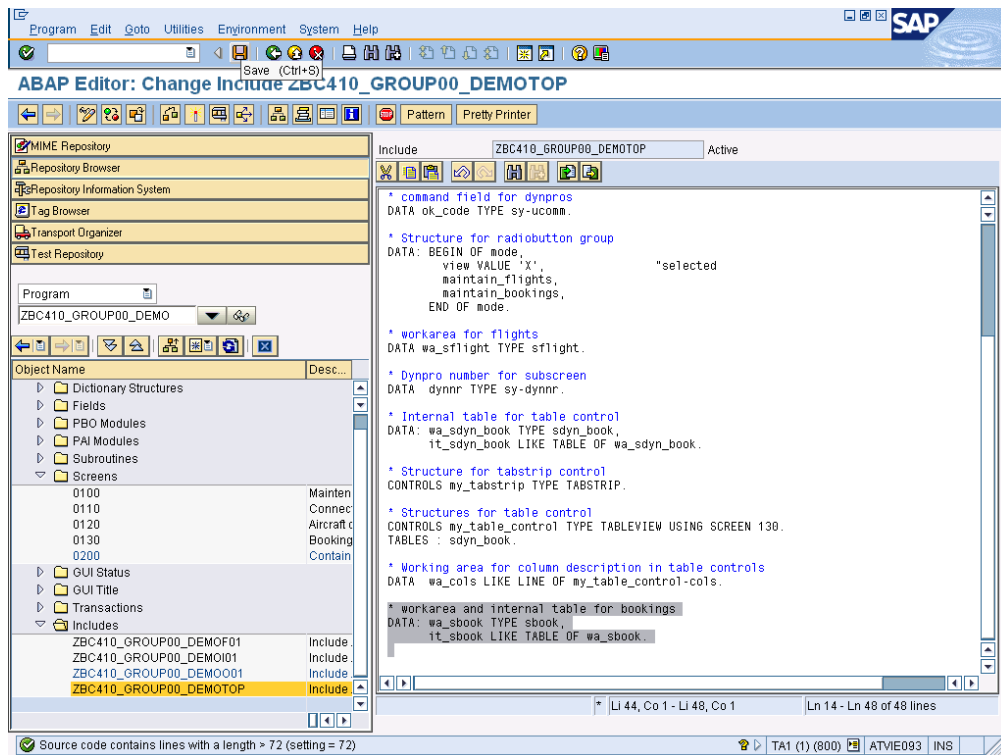
→ Assign the function key <F5> to this push button



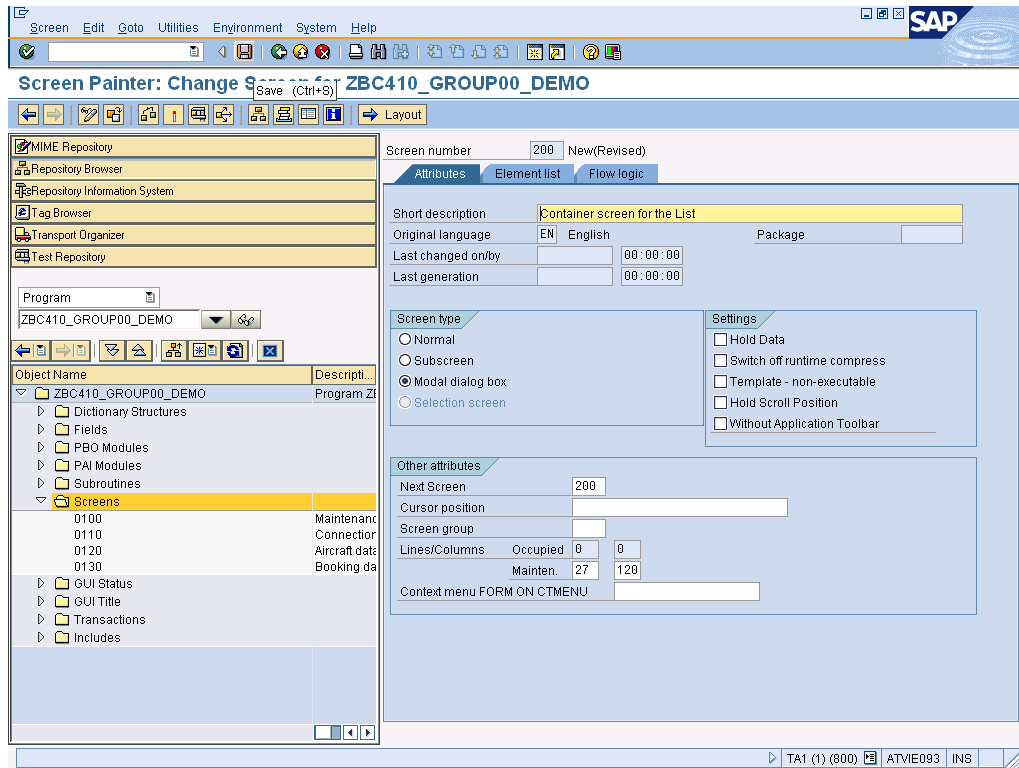
→ If you test your status – you will see that it works



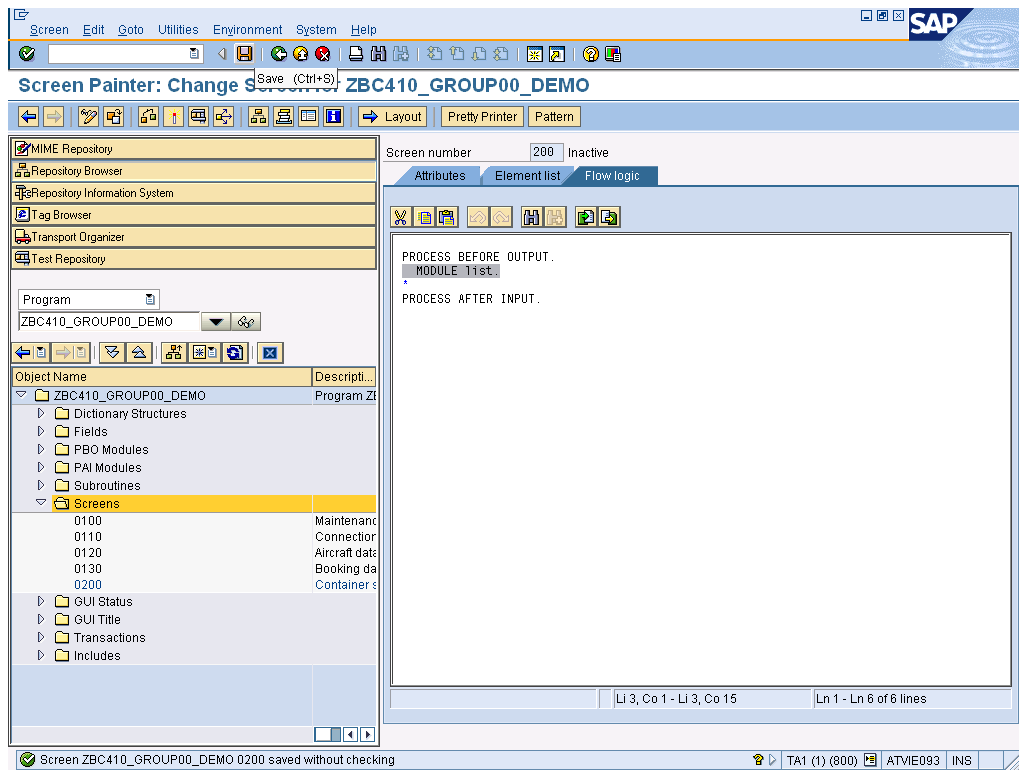
→ Please create a new internal table and a work area for bookings in the TOP include



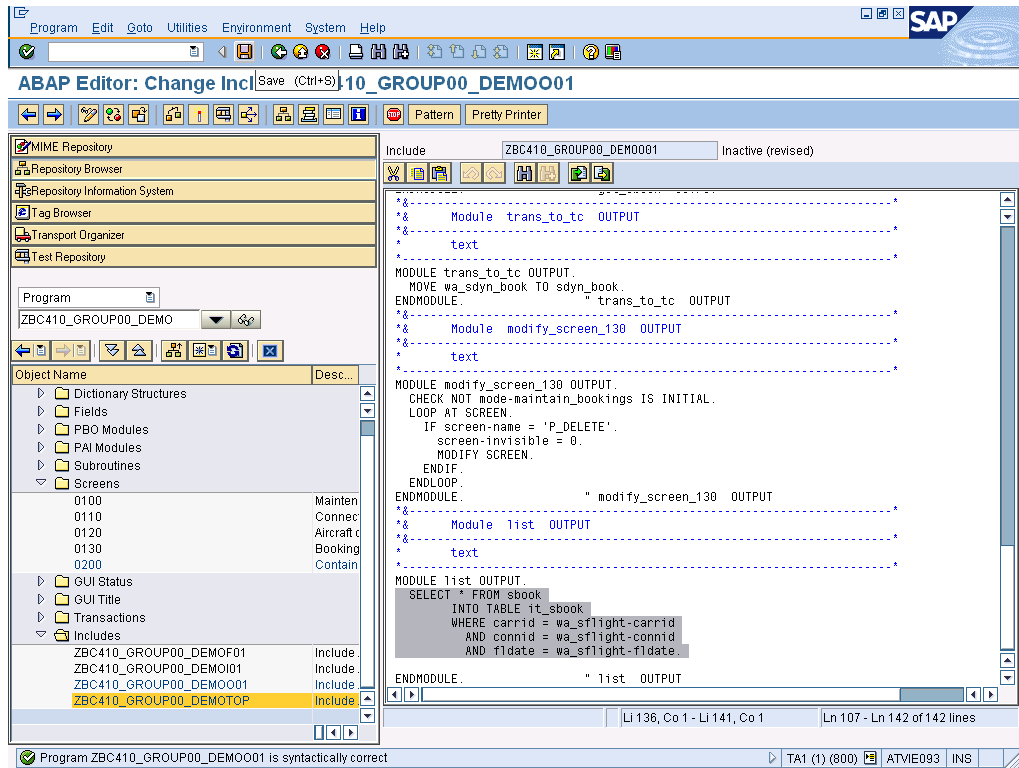
➔ Please create a new modal dialog box screen



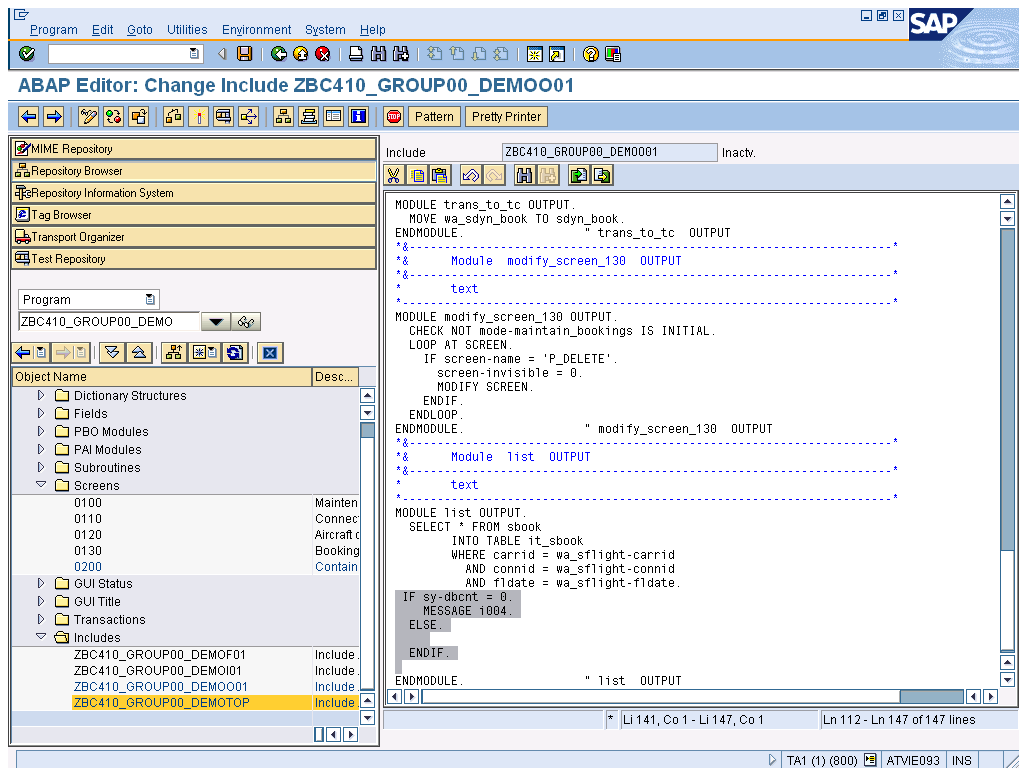
➔ Please create a PBO module for the newly created screen 0200



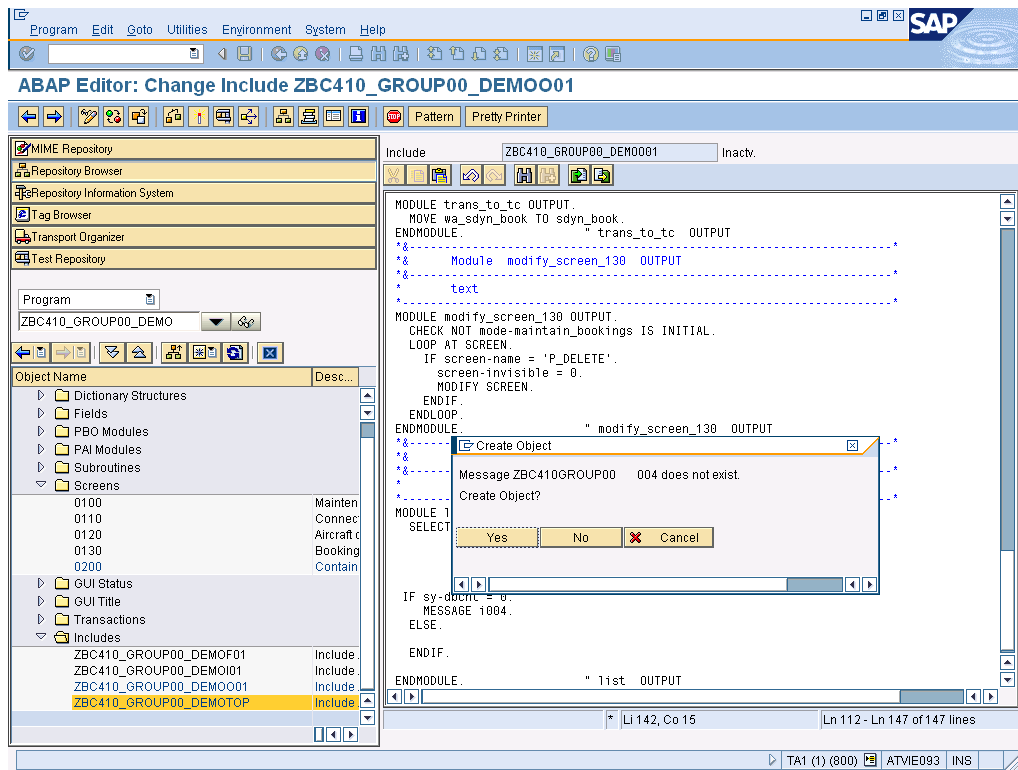
➔ Please fill first the internal table for bookings



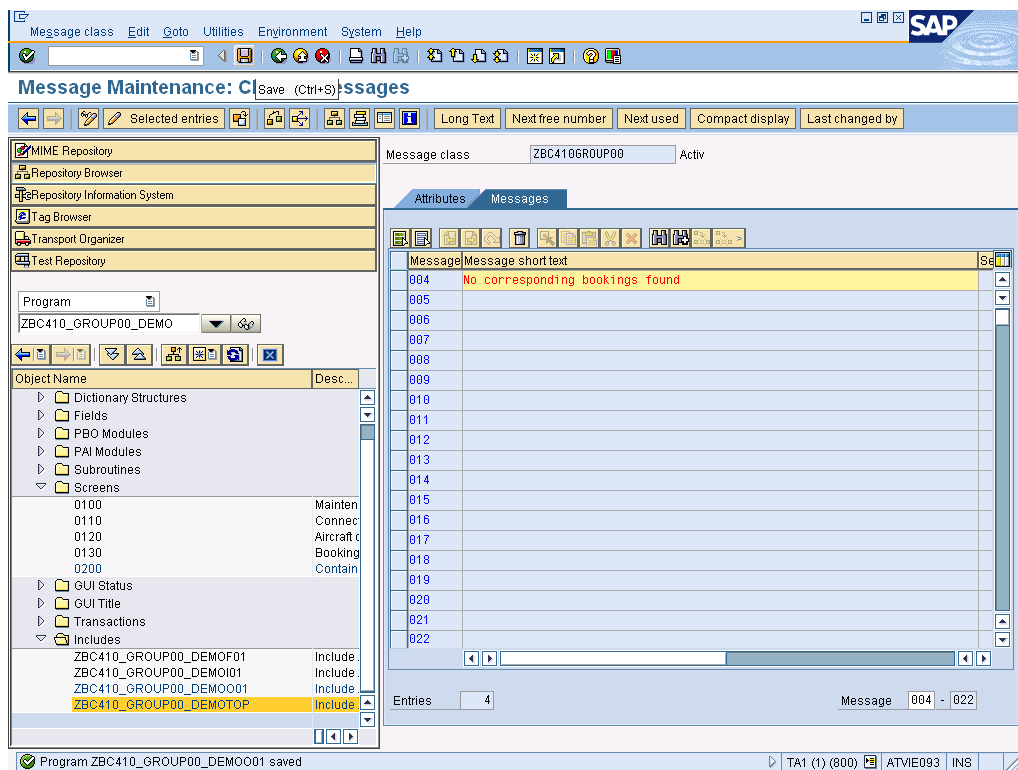
➔ If there is no booking for this flight you should inform the user about this



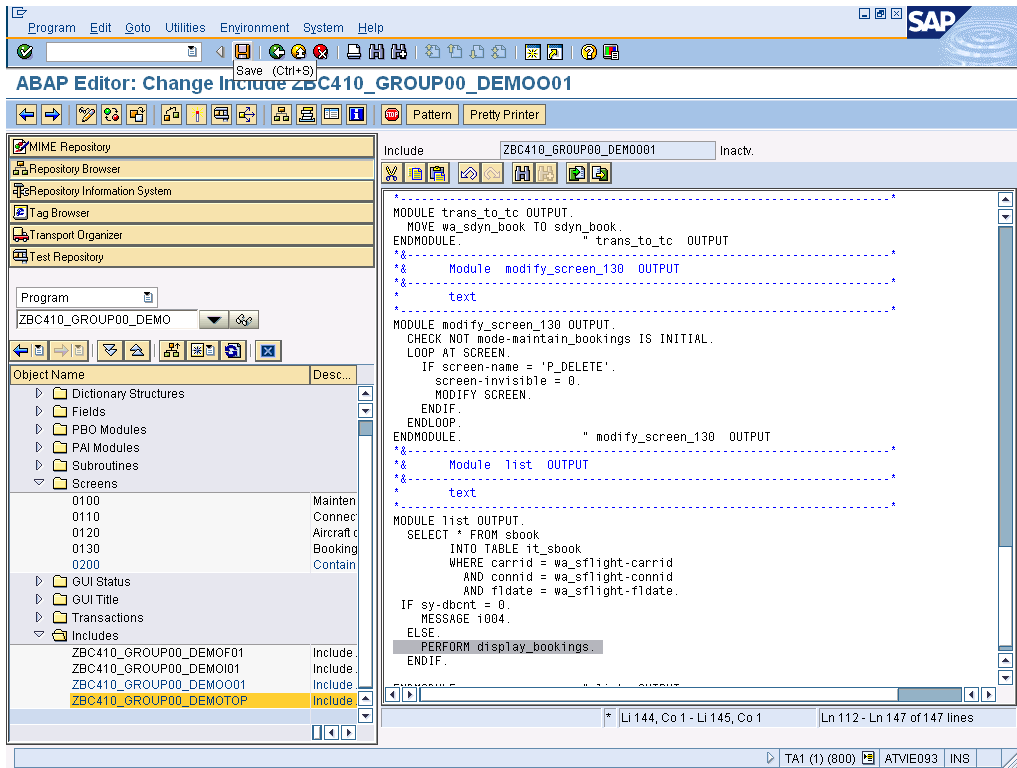
➔ Please create this message as well



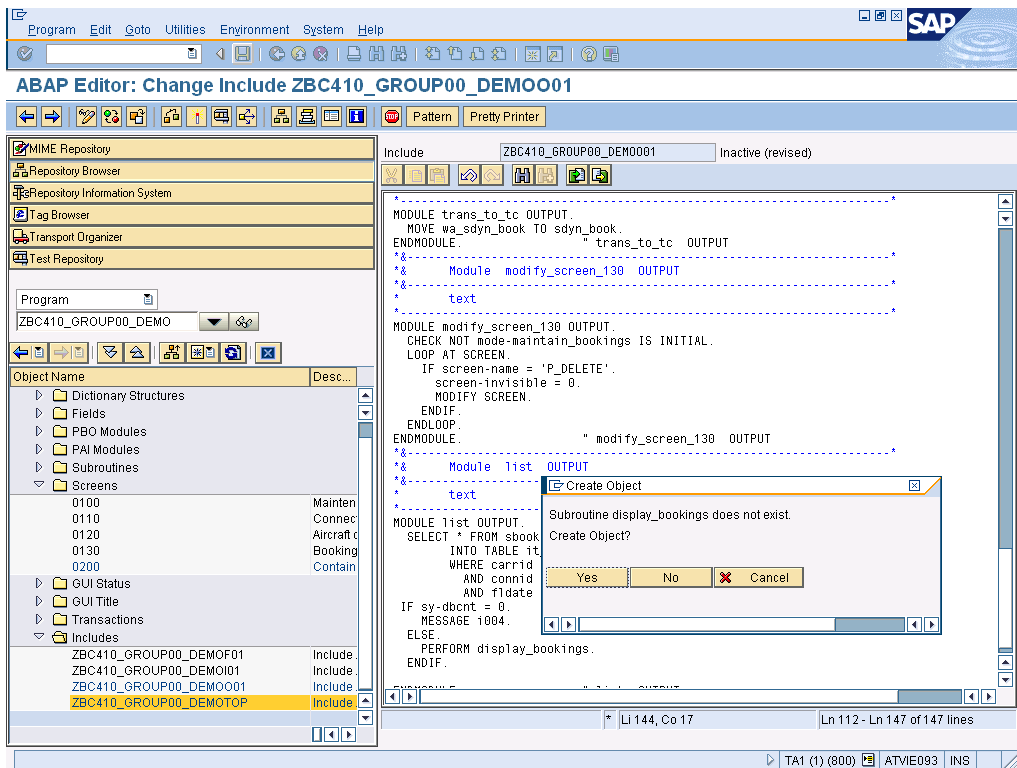
➔ Please save your data



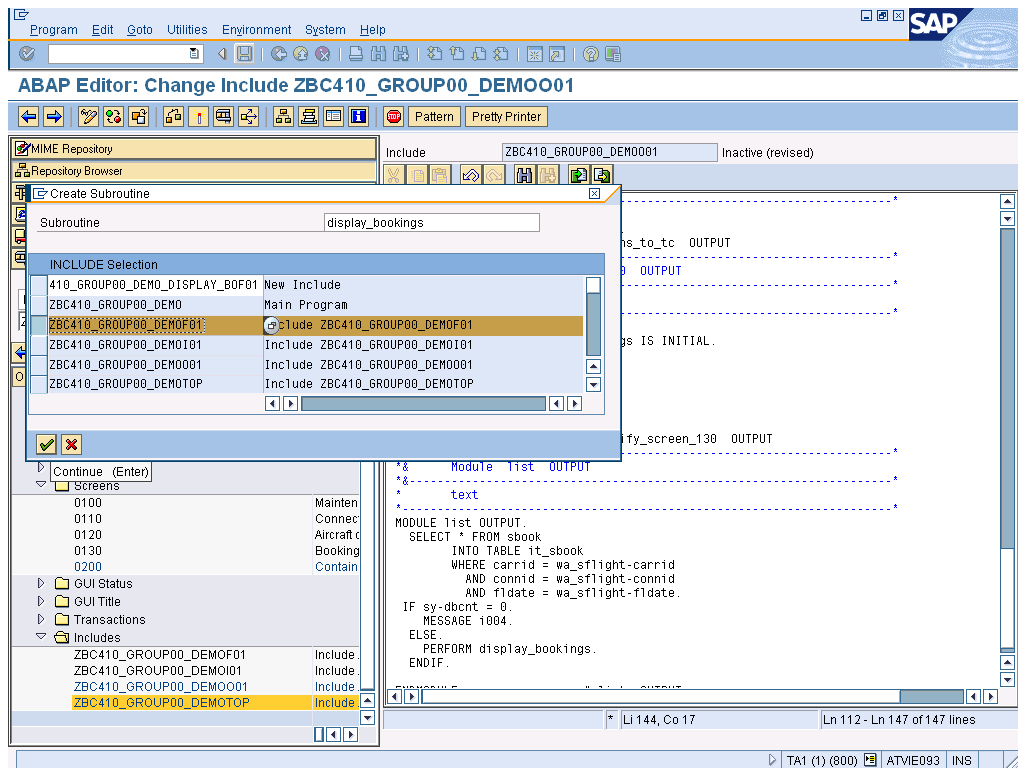
➔ If the ELSE case please call a new module to create this list



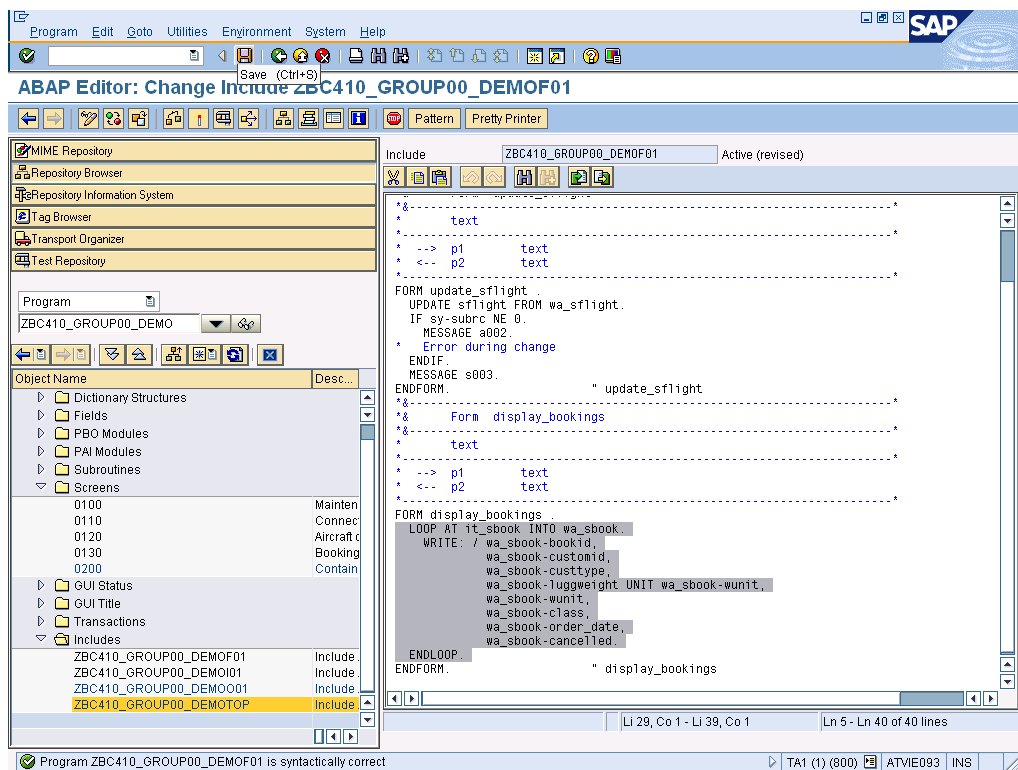
➔ Please create this new form



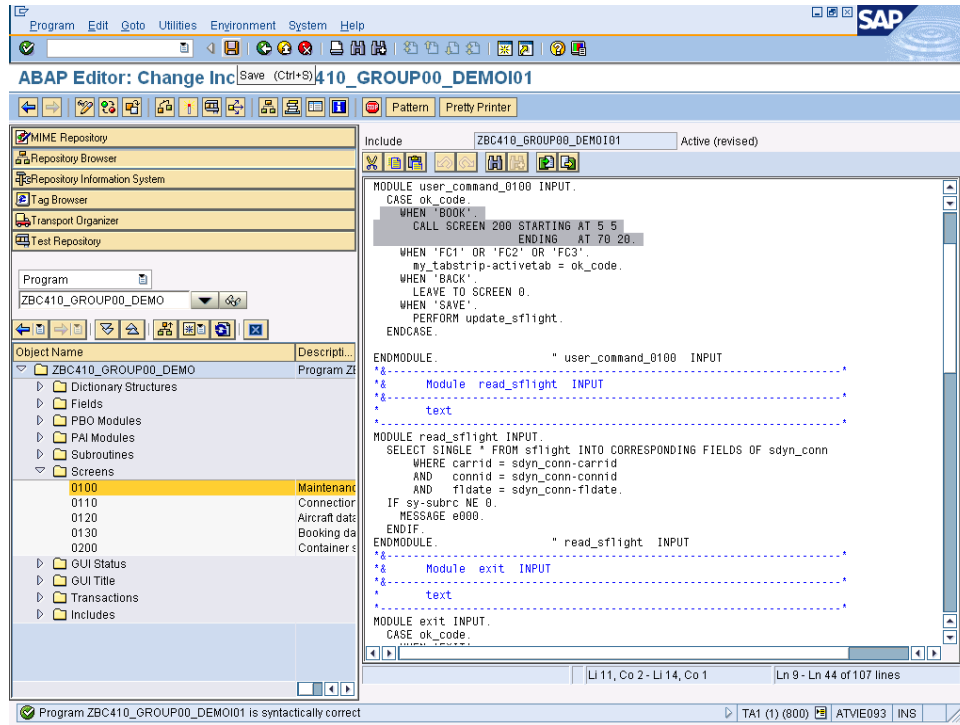
→ The ABAP coding of this form should be placed in the form include



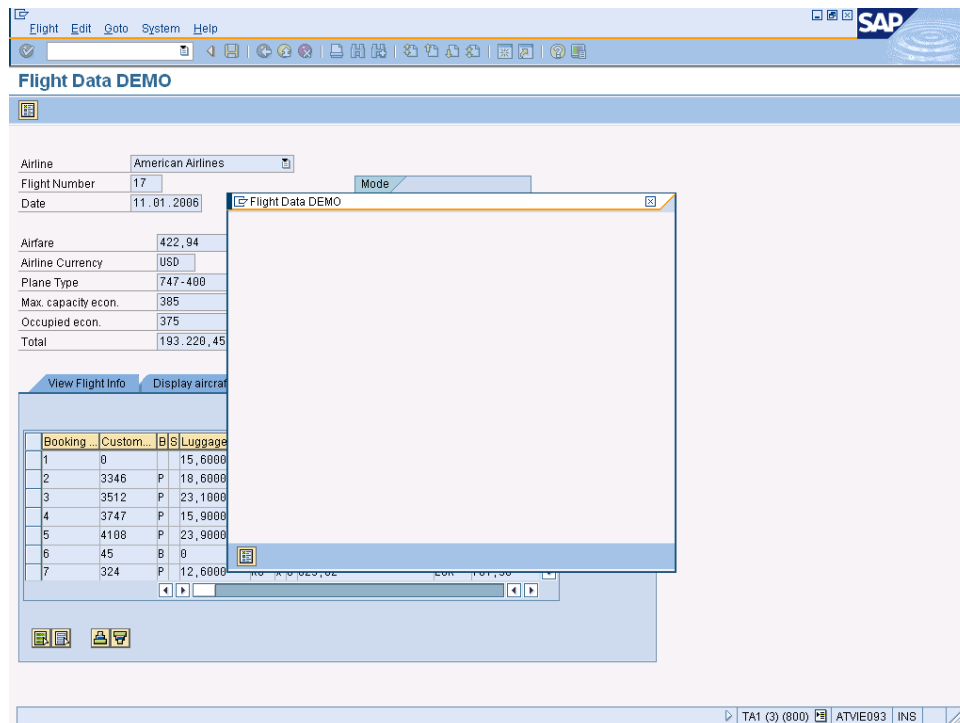
→ Within the loop you can make your list with the ABAP command WRITE



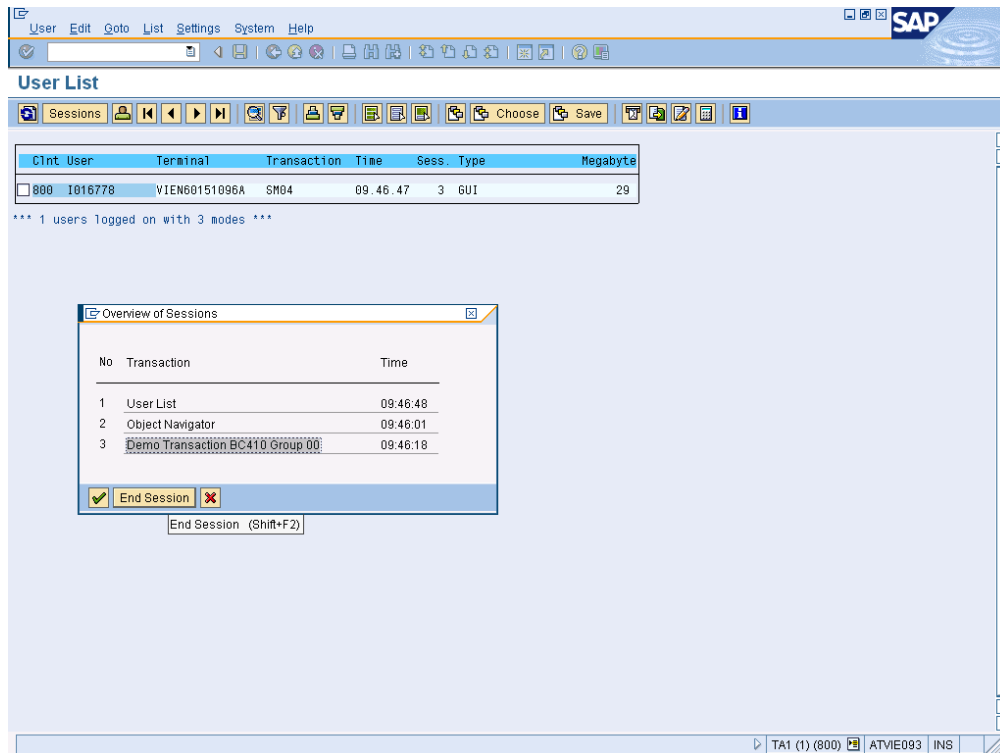
- ➔ Now you have to call this newly created screen in the PAI module "user_command_0100" in dynpro 0100



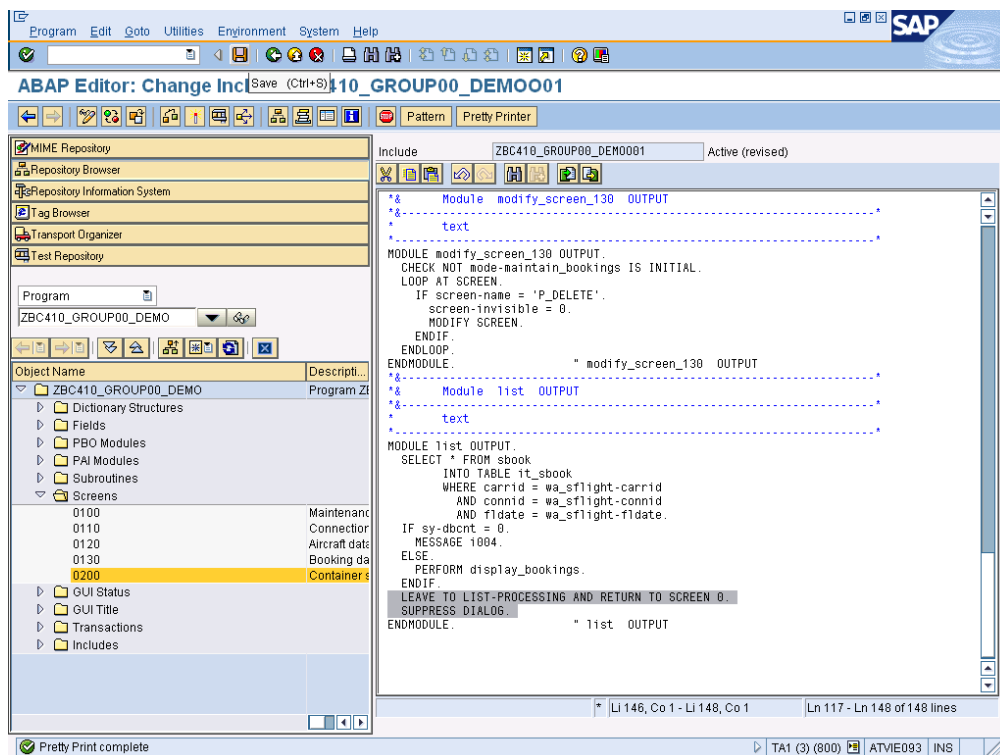
- ➔ Please don't test your application as it doesn't work yet – you have no data on the screen
- ➔ And besides you are not able to leave the transaction



- In a second session in the transaction /nSM04 you have to end this session yourself



- In the PBO module "list" you have to make the following modification

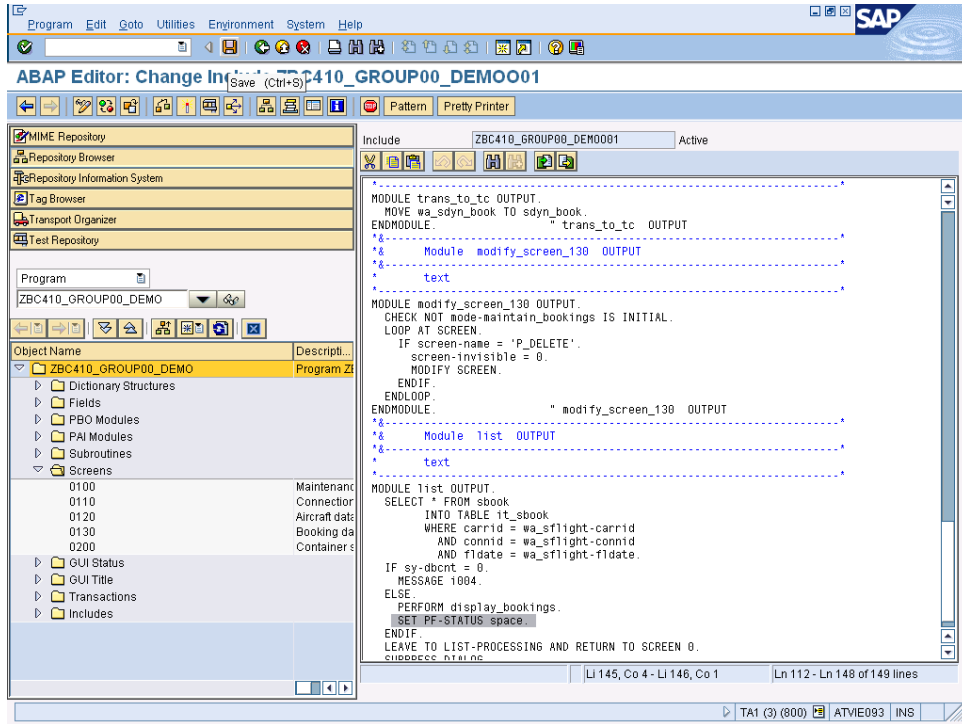


- ➔ Now your list is visible, but you are hence forward unable to leave your transaction. What is to do?
- ➔ Close your session in the transaction /nSM04

The screenshot shows the SAP 'Flight Data DEMO' transaction. The main window displays flight details for American Airlines flight 17 on 11.01.2006. The fare is 422,94 USD. The aircraft is a 747-400 with a maximum capacity of 385 and 375 occupied seats. The total weight is 193,220,45. The departure is from New York (JFK) at 11:00:00, and the arrival is at 14:01:00. A 'Flight Data DEMO' pop-up window is open, showing a list of flight segments with columns for program, weight, unit, class, and date.

Program	ZBC410_GROUP00_DEMO	1
00000001	00000000	15,6000 KG C 01.10.2005
00000002	00003346	P 18,6000 KG C 11.10.2005
00000003	00003512	P 23,1000 KG C 26.12.2005
00000004	00003747	P 15,9000 KG C 15.12.2005
00000005	00004108	P 23,9000 KG C 17.11.2005
00000006	00000045	B 0 KG C 07.11.2005
00000007	00000324	P 12,6000 KG C 02.09.2005
00000008	00001161	P 14,6000 KG C 26.11.2005
00000009	00002052	P 17,2000 KG C 13.12.2005
00000010	00002601	P 10,9000 KG C 14.08.2005
00000011	00002862	P 0 KG C 20.11.2005
00000012	00000830	P 23,6000 KG C 15.11.2005
00000013	00003134	P 21,7000 KG C 24.09.2005
00000014	00003391	P 15,7000 KG C 17.08.2005
00000015	00003674	P 27,1000 KG C 26.10.2005
00000016	00001827	P 0 KG C 12.12.2005
00000017	00003815	P 15,5000 KG C 21.09.2005
00000018	00003308	P 25,7000 KG C 28.11.2005
00000019	00000075	B 13,8000 KG C 01.10.2005
00000020	00003719	P 0 KG C 30.08.2005

- ➔ Please make the following modification in the PBO module "list" for screen 0200
- ➔ The <SET PF-STATUS space> statement ensures that the list is displayed with the standard GUI status for lists.



➔ You may test your application now. Congratulations 😊 It works.

